

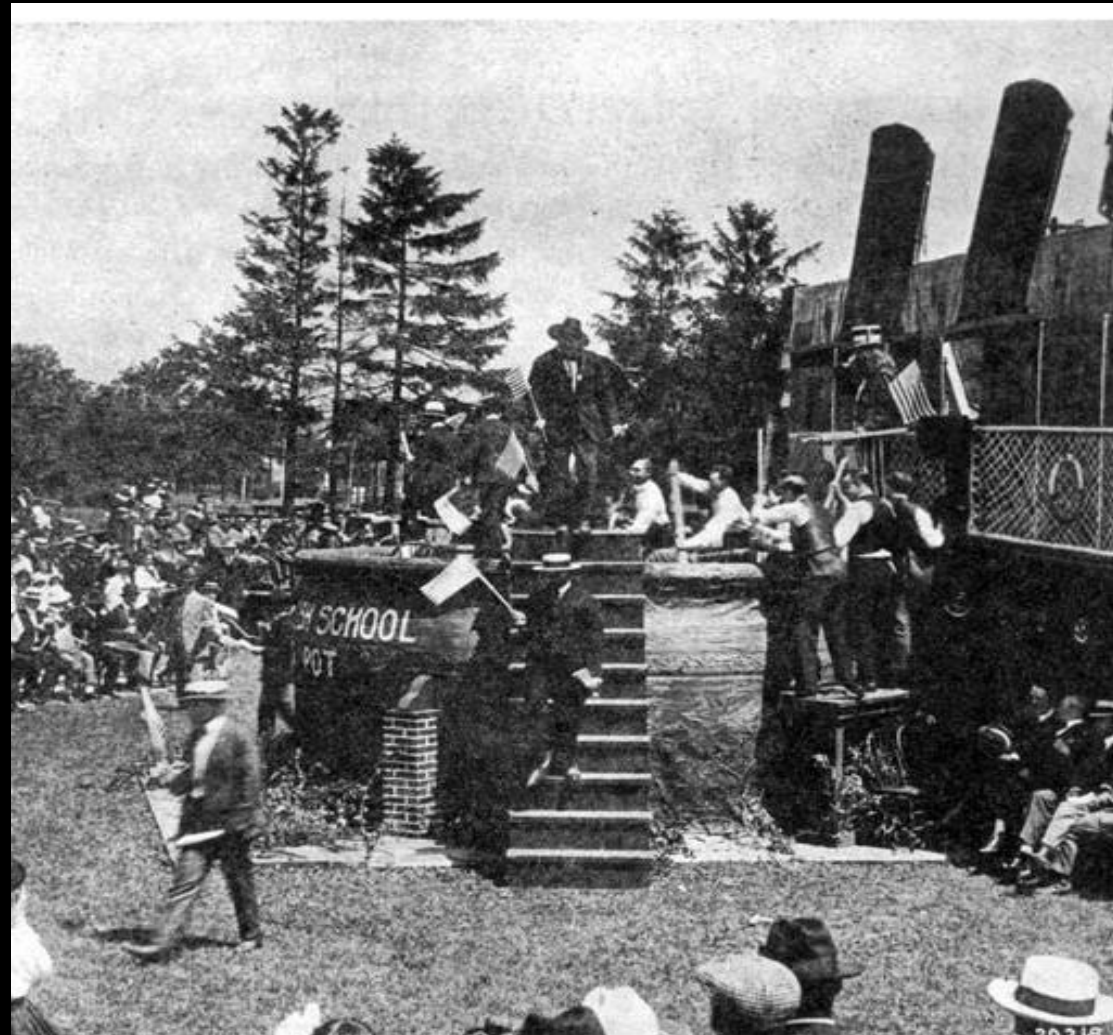


# Engaging Culture

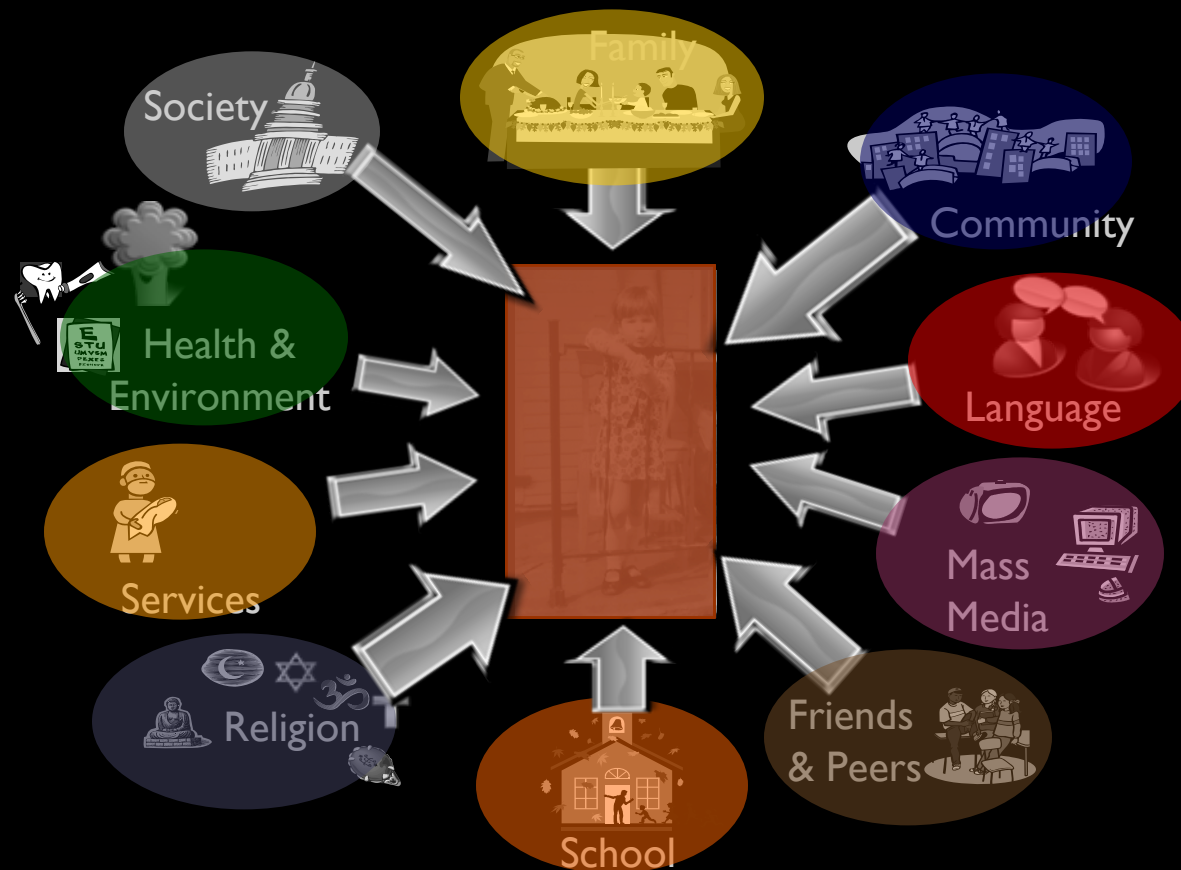


COREY WHITESELL  
PROGRAM COORDINATOR  
GLOBAL CONNECTIONS

# A Little Theory...

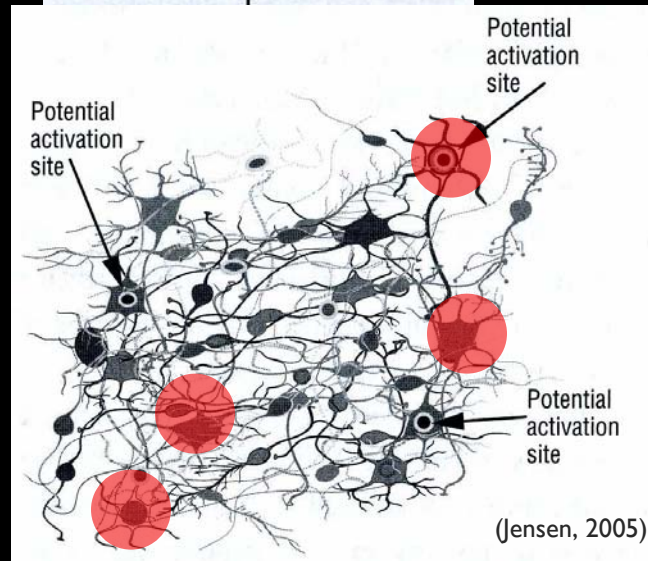


# Where Does it Come From?



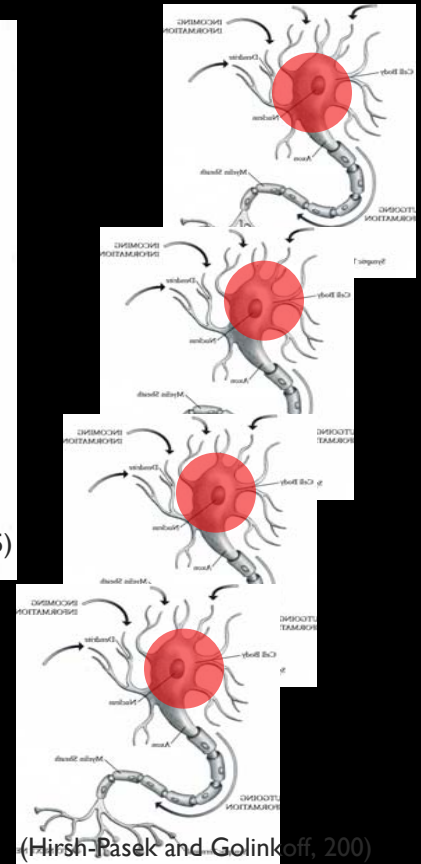


## Sensory Activation

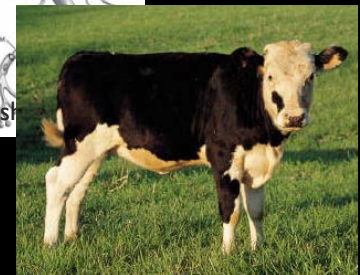
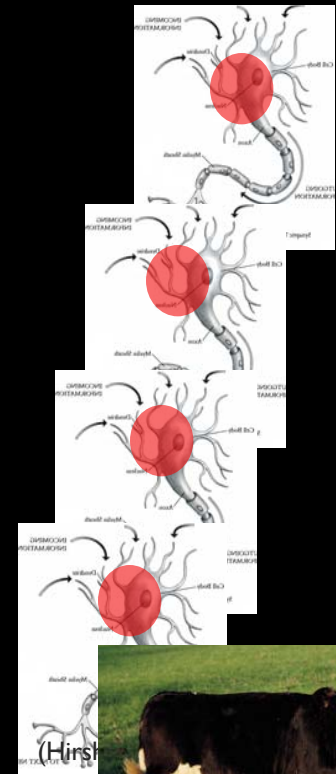
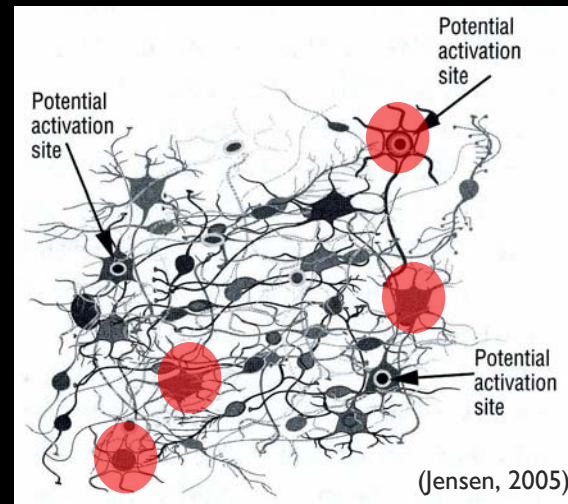
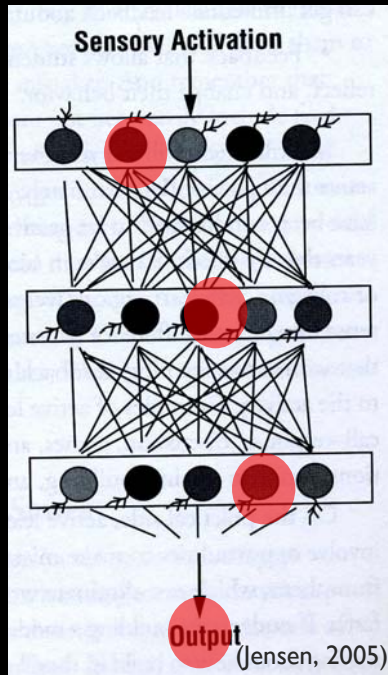


Output

(Jensen, 2005)







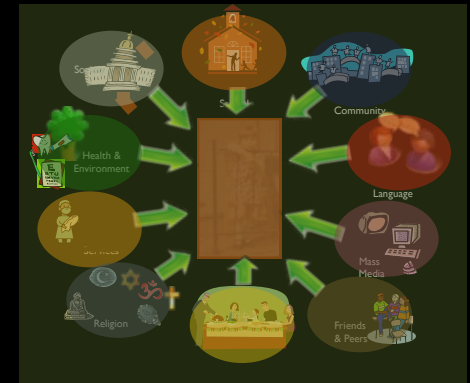
# The Goal



- To give children, teachers and families the tools to recognize and understand culture:

- Language
- Locational
- Socio-Economic
- Disability

with specific focus on...



- #1: to give all parties the connections between their culture and the mainstream culture, so that they are able to succeed in both
- #2: to broaden the social-emotional development of the whole classroom so that we develop people who make better future choices for themselves and the global community

# Defining Culture



SETS  
BOUNDARIES

SETS  
EXPECTATIONS

IS

MEASURABLE

DEFINES  
ITS PEOPLE



SOCIAL VALUES PATTERNS

VERBAL COMMUNICATION

NON-VERBAL COMMUNICATION

ORIENTATION MODE

INTELLECTUAL MODES

Measuring Culture





SOCIAL VALUES PATTERNS

VERBAL COMMUNICATION

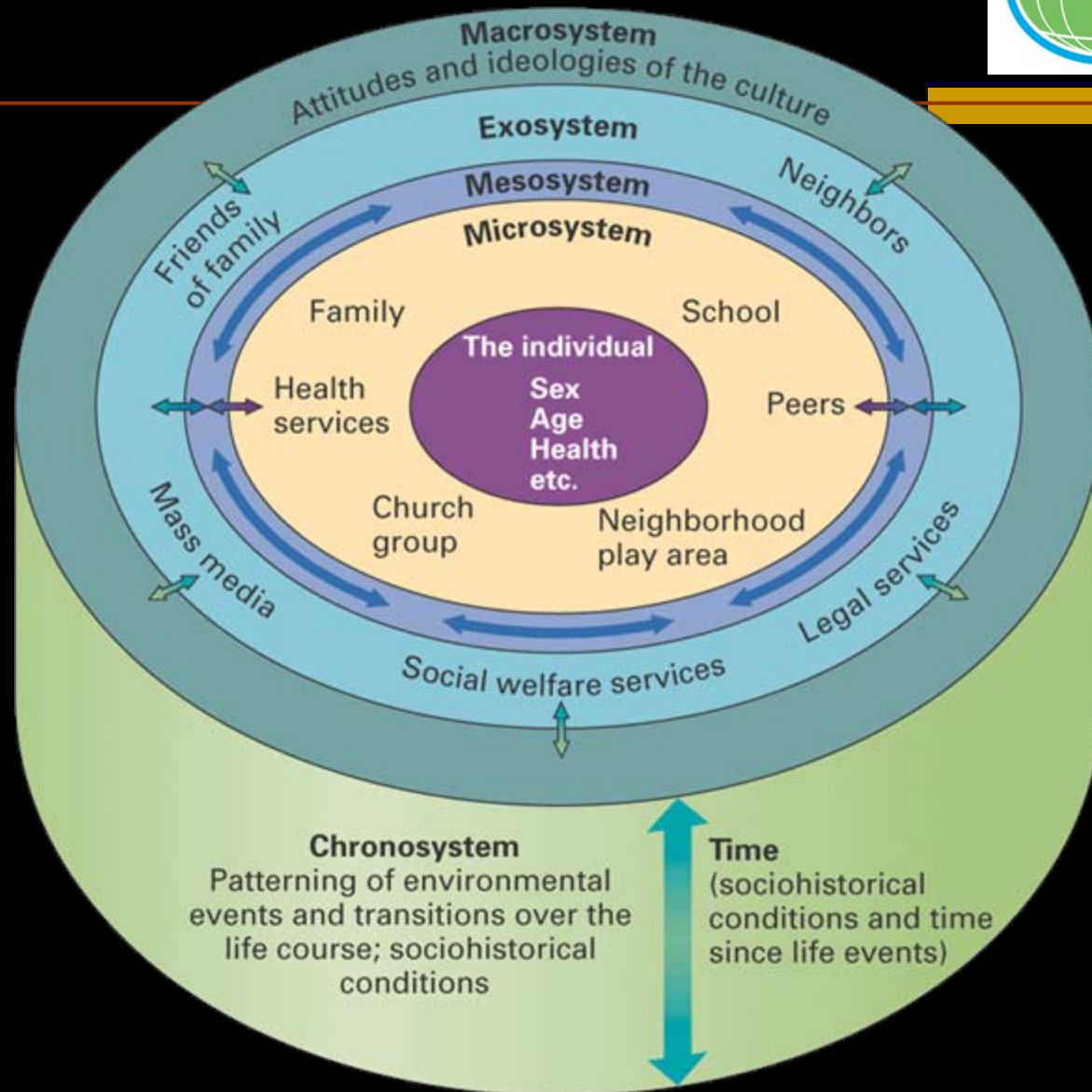
NON-VERBAL COMMUNICATION

ORIENTATION MODE

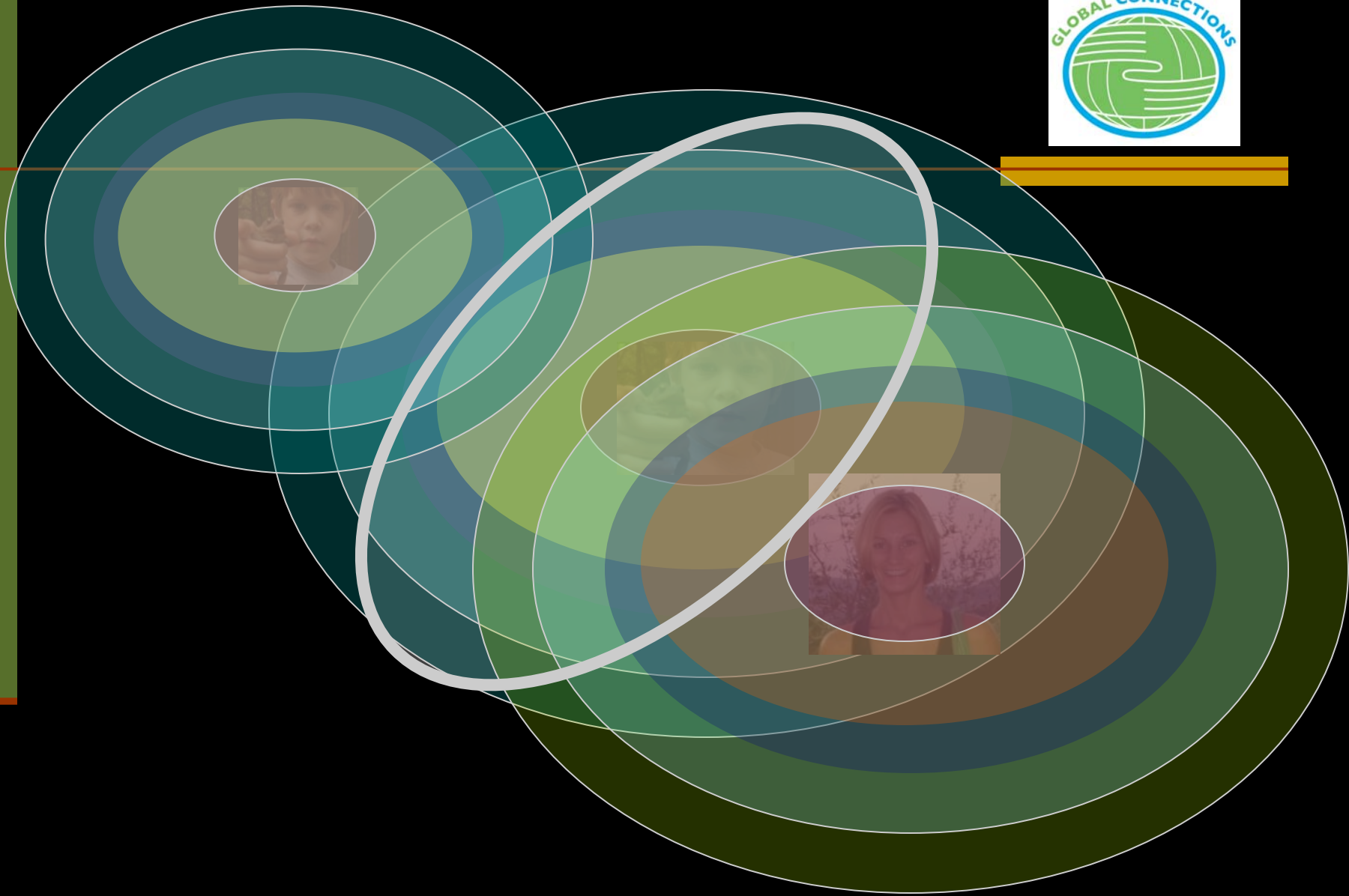
INTELLECTUAL MODES

Measuring Culture

# Brofenbrenner

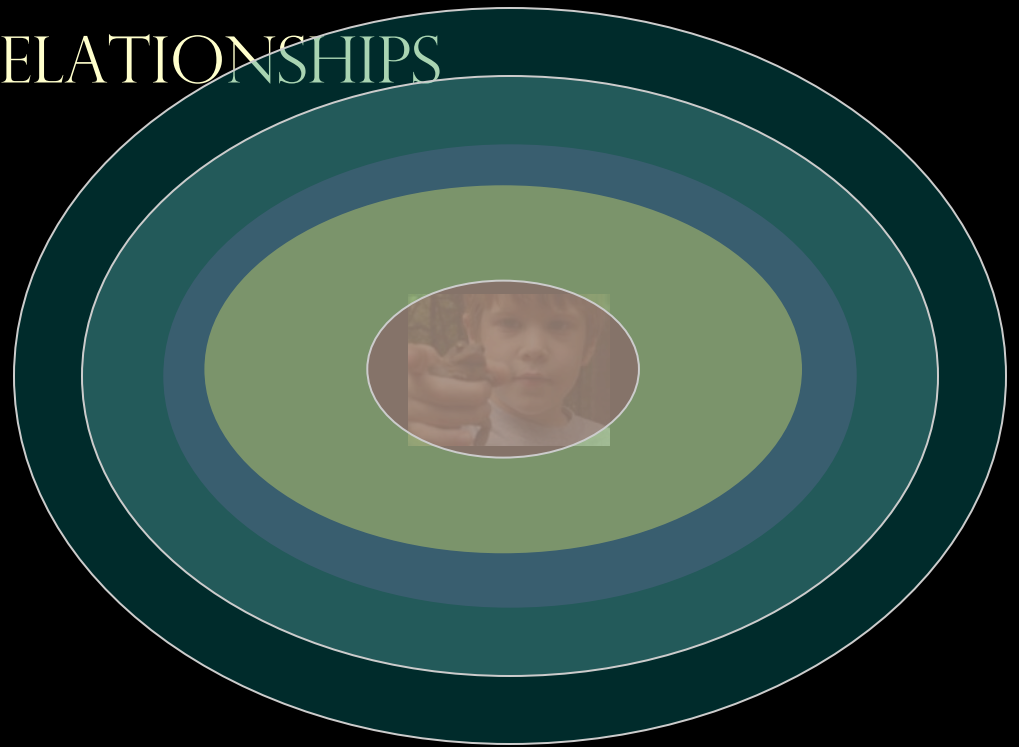








WHAT DO YOU BRING THAT  
HELPS OR HINDERS  
YOUR RECIPROCAL RELATIONSHIPS  
WITH FAMILIES?

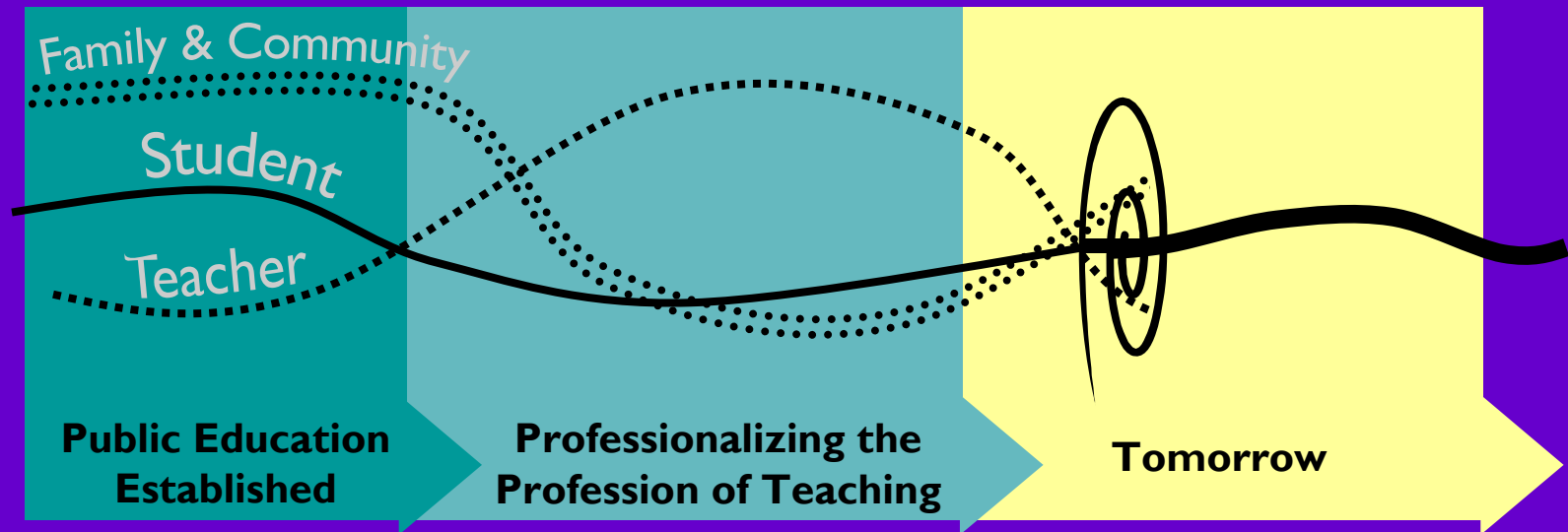




# A LITTLE HISTORY... AND HOPE FOR THE FUTURE



## Historical Balance of Power in Schooling



WHITESELL, C., 2008



## UNIVERSAL DECLARATION OF HUMAN RIGHTS

<http://www.un.org/en/documents/udhr/>

## CONVENTION ON THE ELIMINATION OF ALL FORMS OF DISCRIMINATION AGAINST WOMEN

<http://www.un.org/womenwatch/daw/cedaw/text/econvention.htm>

## CONVENTION ON THE RIGHTS OF THE CHILD

<http://www.unicef.org/rightsite/index.html>

## BOOKS

## PRIMARY SOURCES

# Resources



AND AS ALWAYS... **Global Connections!**

4<sup>th</sup> Floor Boucke Building  
University Park, PA 16802

814-863-3927 or [www.international.psu.edu/gc](http://www.international.psu.edu/gc)

Resources