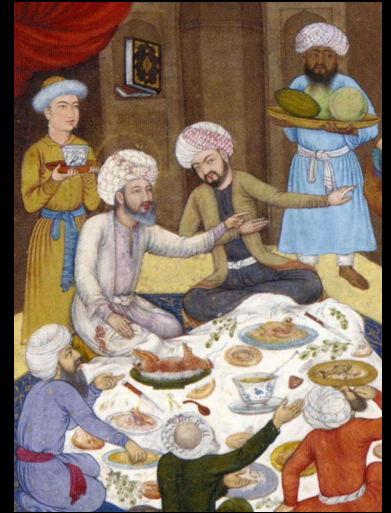
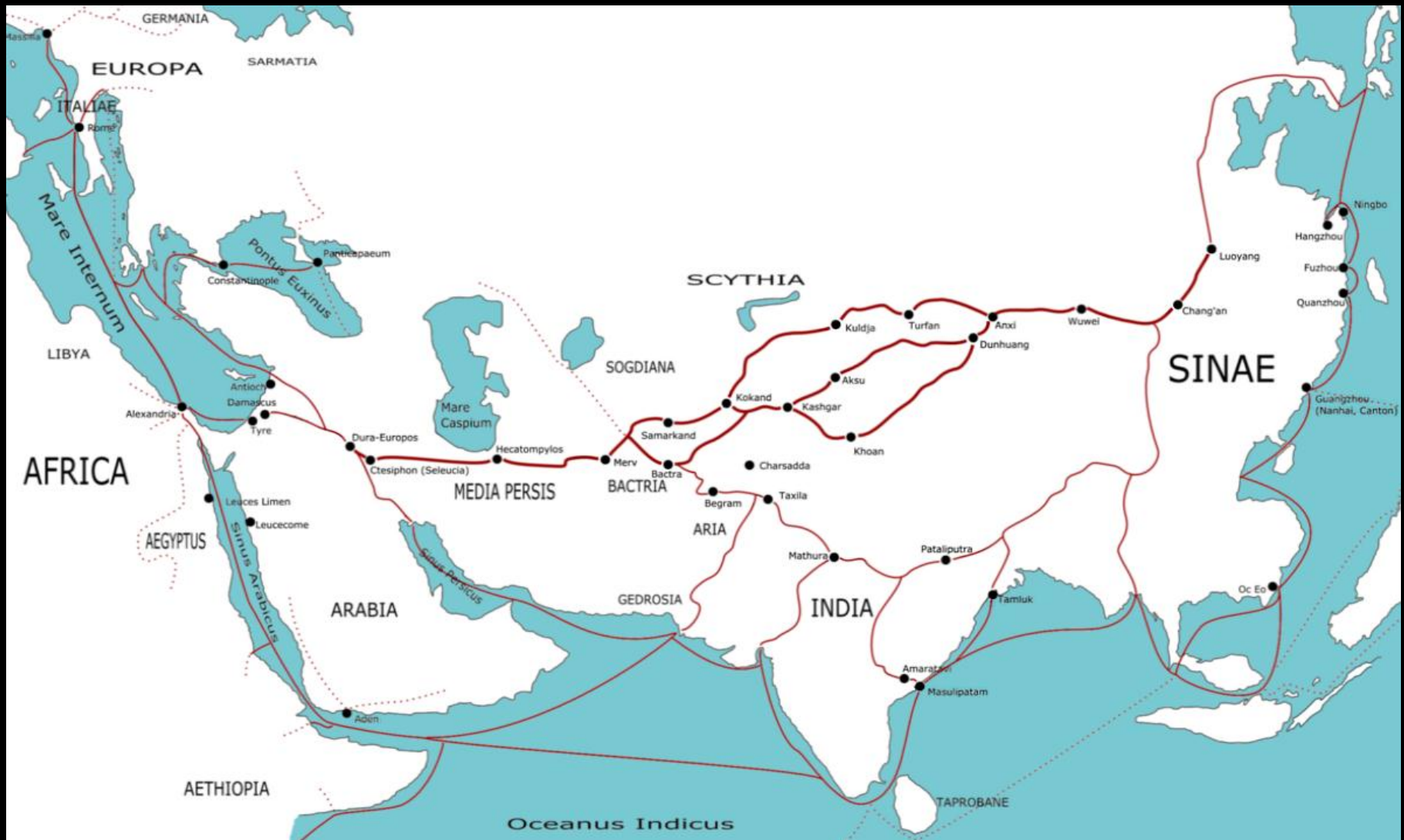


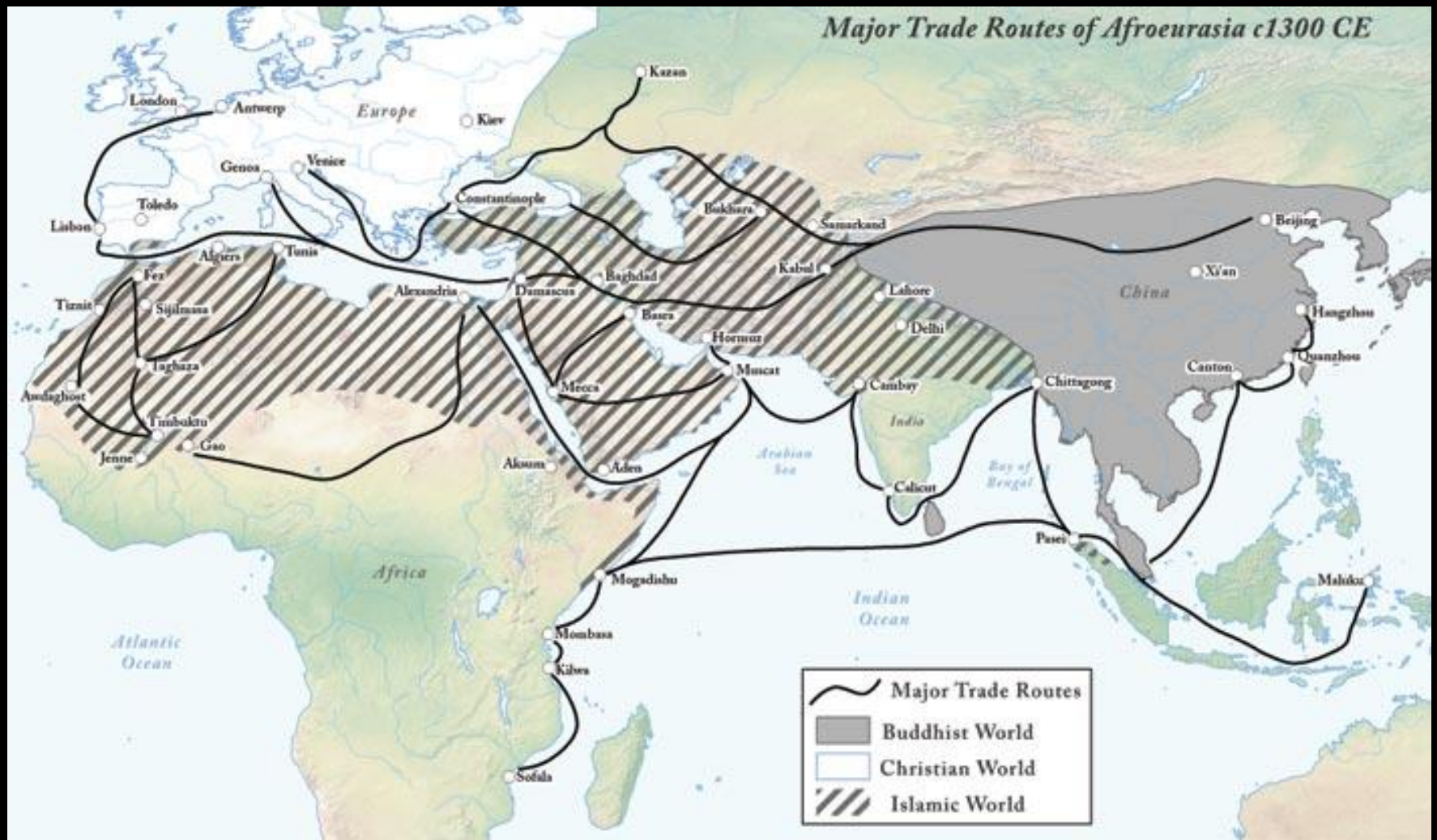
Blue And White Porcelain: An International Sensation



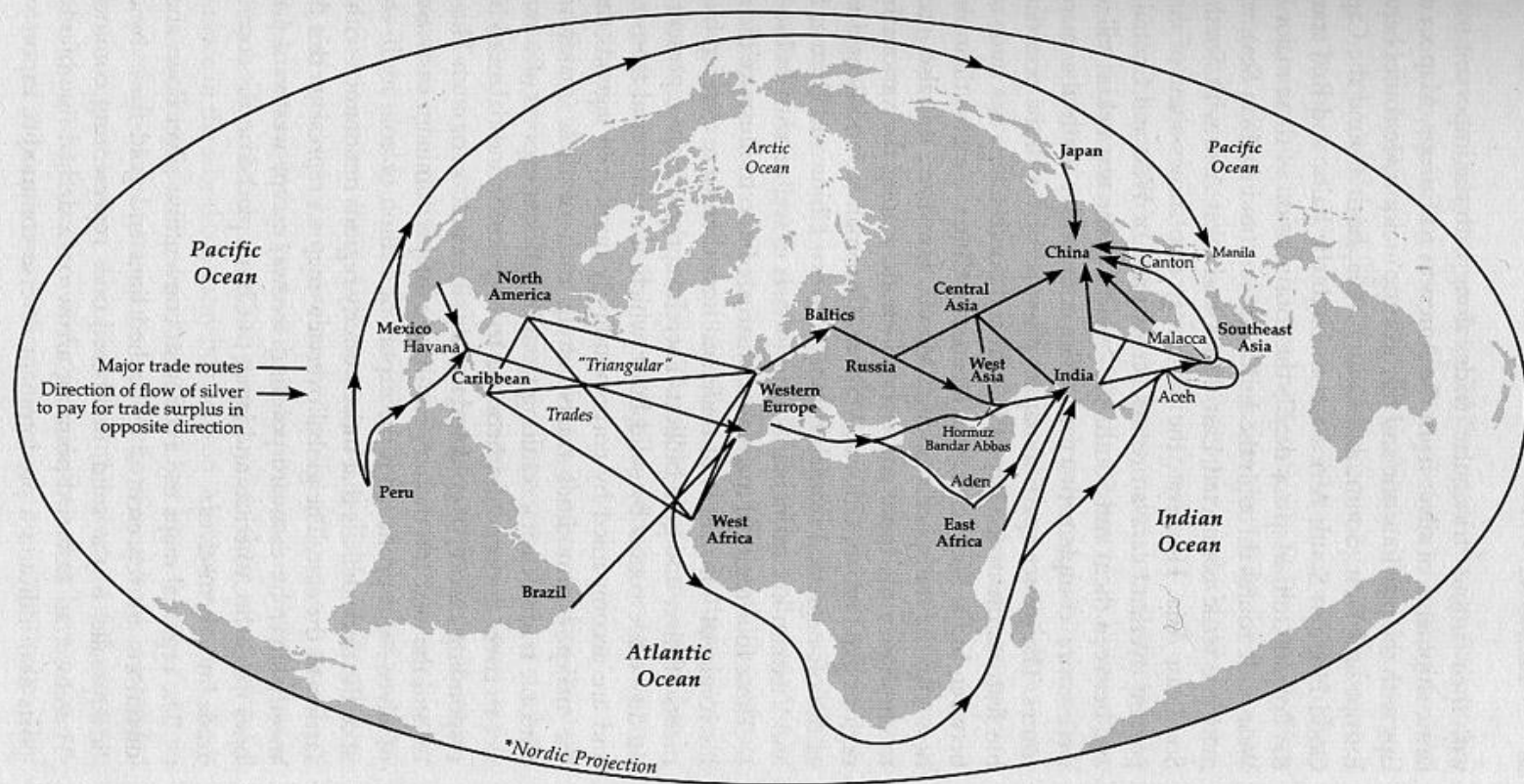


Trade Routes c. 1st c. A.D.

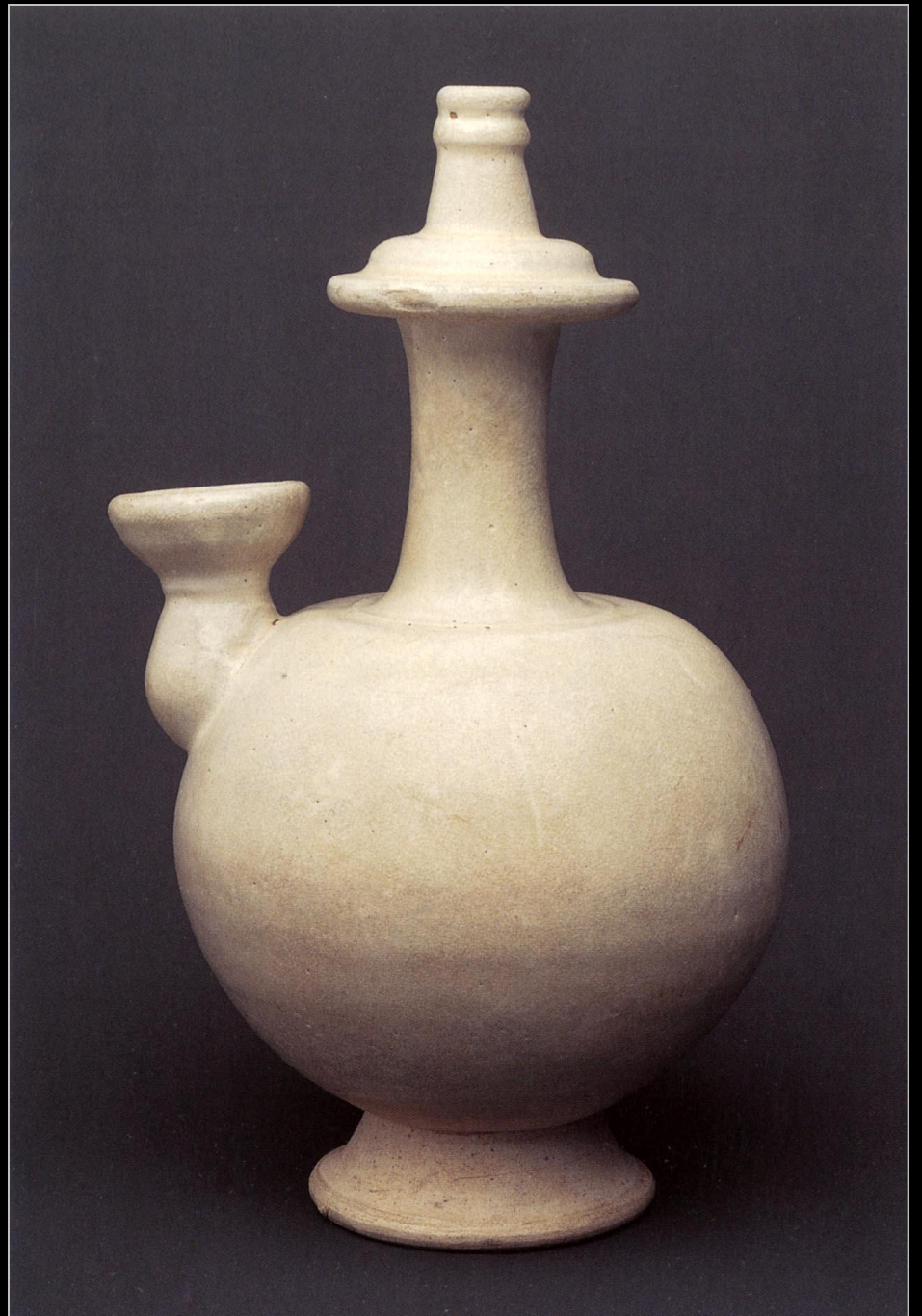
Major Trade Routes of Afroeurasia c1300 CE

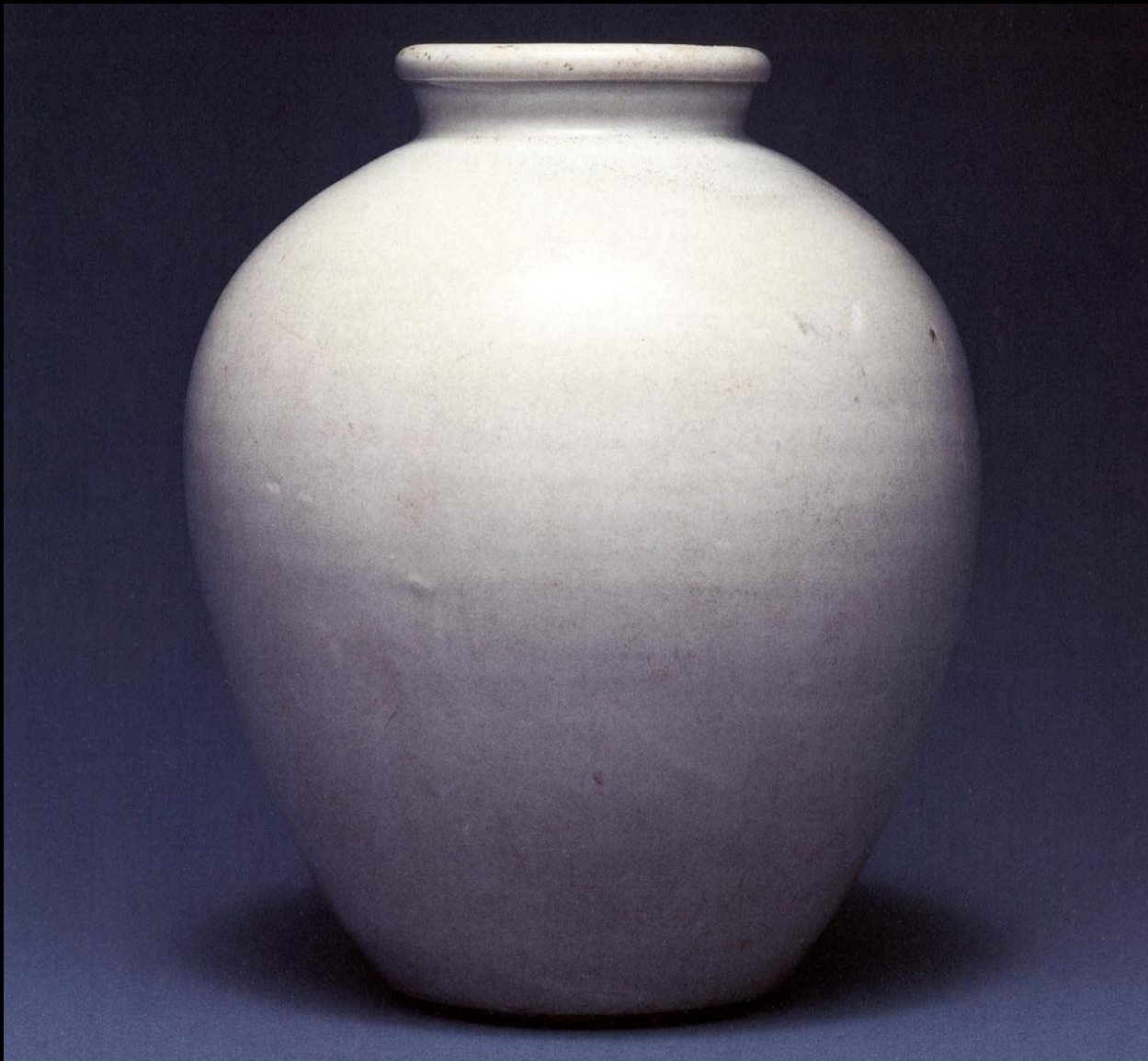


Map 2.1
Major Circum-Global Trade Routes, 1400 – 1800



Kendi (drinking vessel),
porcelain, China, 7th c.





Xing ware jar, porcelain with white glaze, 9th c.



Ding ware dish,
molded
decoration, 12th c



Plate, Iraq, 850-950 A.D.



Plate, Mesopotamia, 9th c.



Tang Dynasty, Hebei Province, China 9th C.

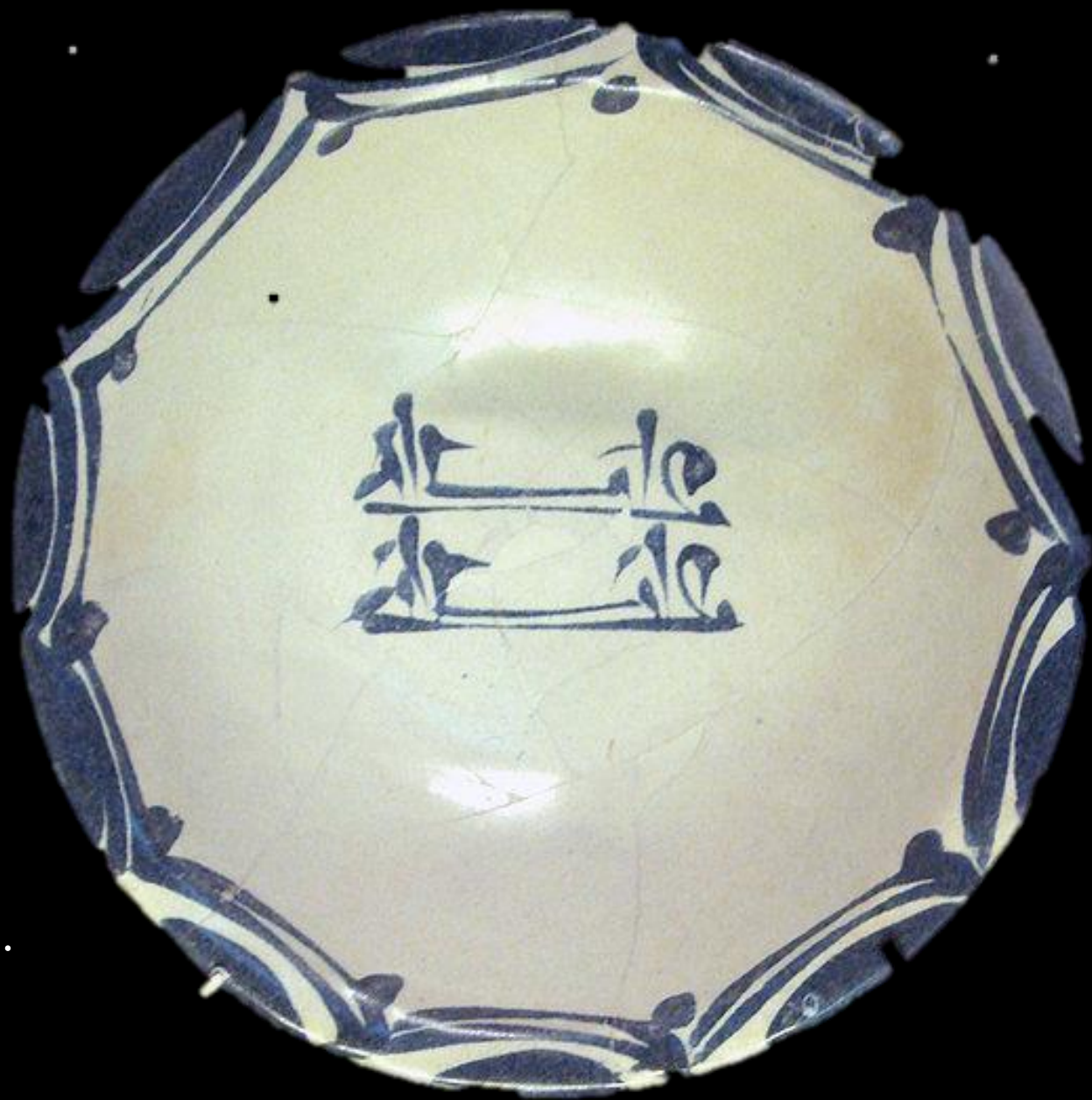


Tang Dynasty, Hebei Province, China 9th C.



Cobalt-painted bowls,
Iraq, 9th-10th c.





Iraq, 9th c.



Jingdezhen ware
dish, cobalt blue
underglaze, 18",
14th c.



Chinese Jingdezhen
plates, c. 1430

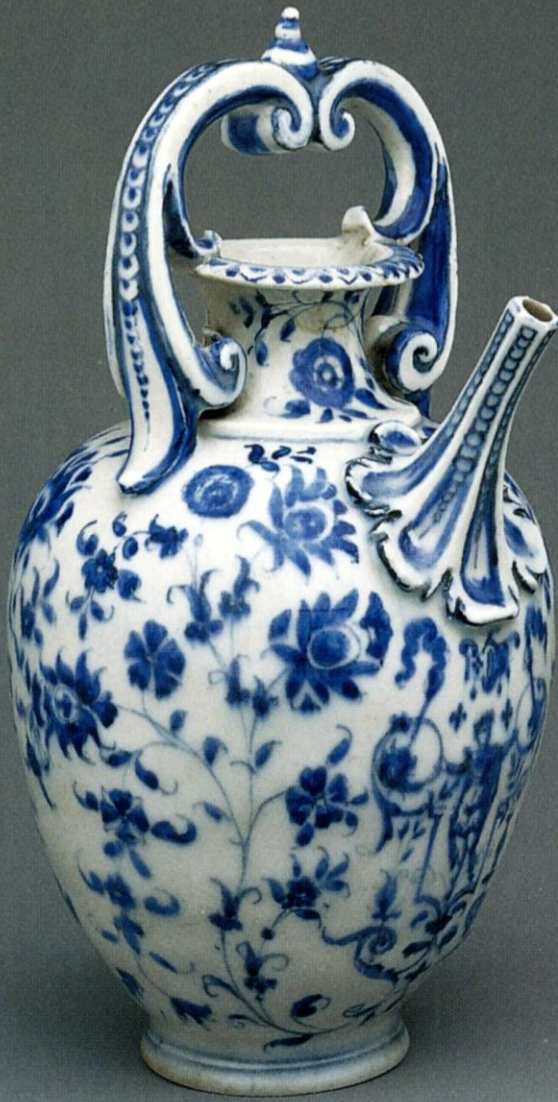


Probably Syrian
(Damascus), Ottoman
period, late 16th c.





Jingdezhen ware bowl,
cobalt blue underglaze,
8½", c. 1430



Medici factory ewer, Italy, 8", c.
1575-87



Vase, Wanli reign mark, 1573-1619,
22", 1573-1619



*Hamza's Son, Rostam,
Questions a Slave Girl
from the Hamzanama, c.
1562-77*





Abu' l Hasan, *Ibrahim Recieves a Zoroastrian*, from a *Bustan* by Saadi, c. 1605-6



Clara Peeters, *Still Life with Cheeses, Pretzels, Nuts and Dates*, c. 1610



Johannes Vermeer, *Woman at Window Reading a Letter*,
1657-9





Willem Kalf, *Still Life with Chinese Bowl*, 1662

Willem Kalf, *Still Life
with Silver Ewer,
Chinese Bowl and
Lemons*, 1655-7





VOC (Dutch West
Indies Company) plate,
hard paste porcelain,
Imari ware, Japan,
export type, 15", c.
1660



Garniture of five vases (*kasteel*), Delftware, tin-glazed earthenware, 19",
signed by Lambertus van Eenhoorn, c. 1710





Cornelis de Man, *Family at Dinner Table*, o/c, 23 x 28", c. 1665-70



Delftware Wineglass Cooler, Netherlands, late 17th c.



Delftware Tulip Vase, c. 48",
Netherlands, early 17th c.



Delftware Tiles with Merchant Sailing Vessels, 16th c.



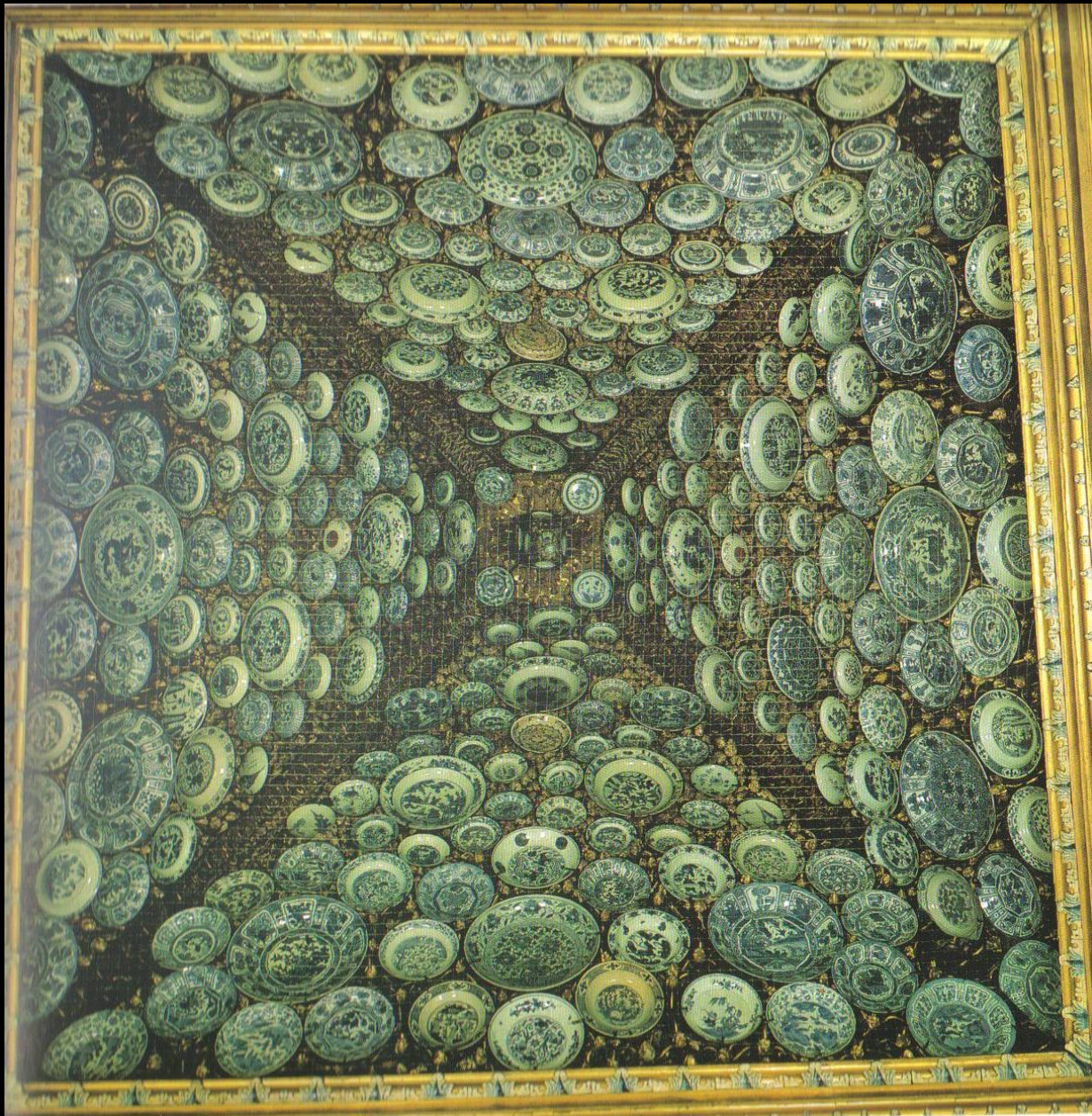
Delftware Tiles,
various subjects,
Netherlands, 17th c.



Left, Talavera Poblana Tiles, Puebla, Mexico, glazed terracotta, 5 x 5", c. 1650



Talavera Poblana
Earthenware Basin,
glazed terracotta,
21", Mexico, c. 1650



Pyramid Ceiling of
De Santos Palace,
Lisbon, 17th c.

Steeple encrusted with Chinese
porcelain dishes

Nossa Senhora de Coneicao do Monte,
Cachoeira, Bahia, Brazil, 18th c.









Porcelain dish,
China, 1590-1610



Talavera Poblama
Earthenware
Basin, Mexico,
26", 18th c.



Plate, blue and white ware, Puebla, Mexico, c. 2011



Jingdezhen
ware dish,
cobalt blue
underglaze,
18", 14th c.

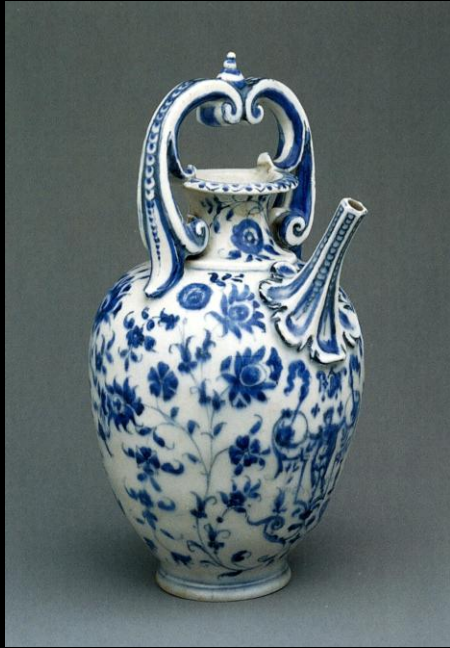


Plate, blue and white ware, Puebla, Mexico, c. 2011





Ceramics Shop, Mérida, Yucatán, Mexico, 2010



Medici factory
ewer, c. 1575-87



Mug sold in Metropolitan Museum of Art Shop to commemorate
opening of new galleries of middle eastern art

IZNIK TILE MUGS

During the age of the great Ottoman sultan Süleyman the Magnificent (1494–1566), Iznik, a small town in northwestern Turkey, emerged as one of the most important centers for ceramic production in the Middle East. The Museum's collection holds a splendid hexagonal tile from Iznik, made about 1535. Its repeating floral design contains swirling arabesques, intricate *saz* leaves, and stylized flowers encircling a central rosette. Our porcelain mugs are based on the original tile.

H. O. Havemeyer Collection, Gift of Horace Havemeyer, 1940 (40.181.11)

Set of 2

Dishwasher and microwave safe

Proceeds from the sale of all merchandise are used to support the Museum.



\$40.00

Made in China © 2011 MMA
store.metmuseum.org



andise are used to support the Museum.

Made in China © 2011 MMA

store.metmuseum.org



SKU 80010977

